

# The 8800 Series: Presets – Save and Recall



# 8800 Series Presets

## Introduction

The 8800 Series supports a quick setup mode called Presets.

Each 8800 is pre-configured with 3 presets

Digital: Recalls tiles for testing a digital radio

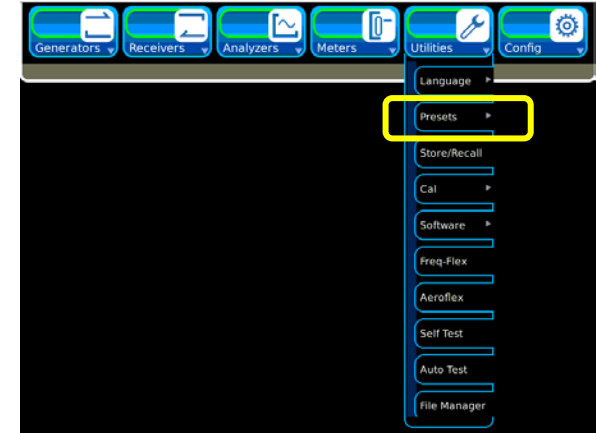
Analog: Recalls tiles for testing an analog radio

Clear Display: Removes all tiles from the screen

A Preset saves/recalls the following:

1. Save/Recall what tiles are currently open
2. Save/Recall the position and stack level of each tile
3. Save/Recall Generator Modulation type
4. Save/Recall Receiver Demodulation type
5. Save/Recall Receiver IF Filter setting
6. Save/Recall Receiver AF Filter setting
7. Save/Recall Audio Routing for meters and scope

To recall a Preset, select Presets from the Utilities Menu then select a preset from the list of available presets.

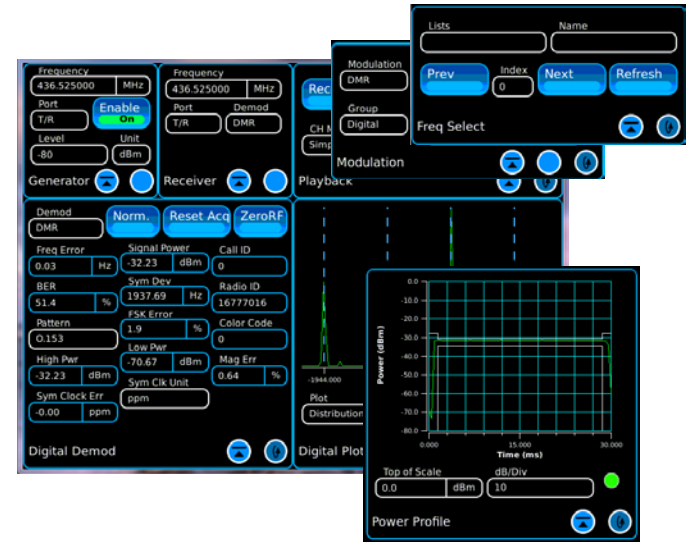



# 8800 Series Presets

## Digital Preset

The following configuration is established when you recall the Digital Preset:

1. Generator Tile
2. Receiver Tile
3. Digital Demod Tile
4. Digital Plots Tile
  - a. Power Profile Tile (DMR use only)  
(Fast Stack)
5. Frequency Select Tile
  - a. Record Playback Tile (Fast Stack)
  - b. Generator Modulation Tile (Fast Stack)



This exploded view of the “Digital” Preset after recalling. Using the Fast Stack button  you can gain access to the tile that is underneath the top level tile.

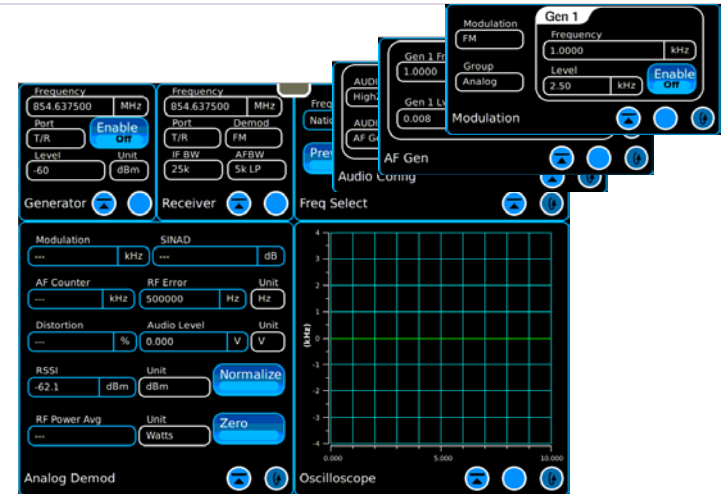
After recalling this preset, you can simply change the Receiver Demod type to a different digital mode like P25 or NXDN™ then change the Generator Modulation type to match.


# 8800 Series Presets

## Analog Preset

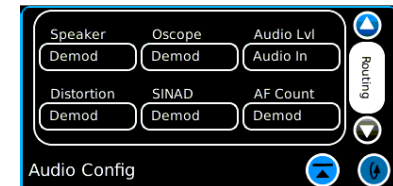
The following configuration is established when you recall the Analog Preset:

1. Generator Tile
2. Receiver Tile
3. Analog Demod Tile
4. Oscilloscope
5. Frequency Select Tile (Fast Stack)
  - a. Audio Config Tile (Fast Stack)
  - b. AF Generator Tile (Fast Stack)
  - c. Modulation Tile (Fast Stack)



This exploded view of the “Analog” Preset after recalling. Using the Fast Stack button  you can gain access to the tile that is underneath the top level tile.

Audio routing is configured as indicated with everything routed to the 8800S Receiver Demod except for the Audio Level Meter.

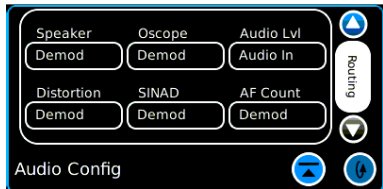


# 8800 Series Presets

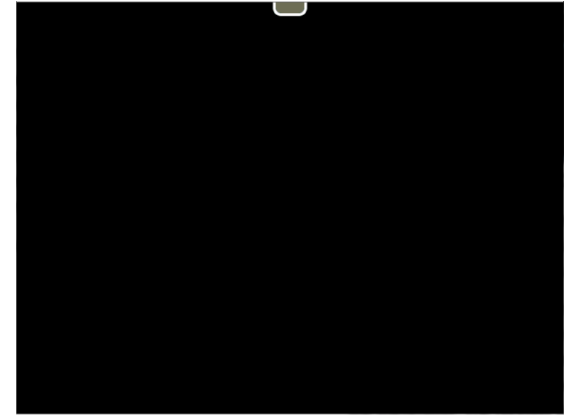
## Clear Display Preset

The Clear Display Preset simply removes all tiles from the display to start from a clean slate.

The Generator and Receiver modulation types are set to FM and the Audio Routing is established the same as it is for the Analog Preset.



The 8800 Receiver IF Filter will be set to 25 kHz and the AFBW filter will be set to none.



# 8800 Series Presets

## Create a New Preset

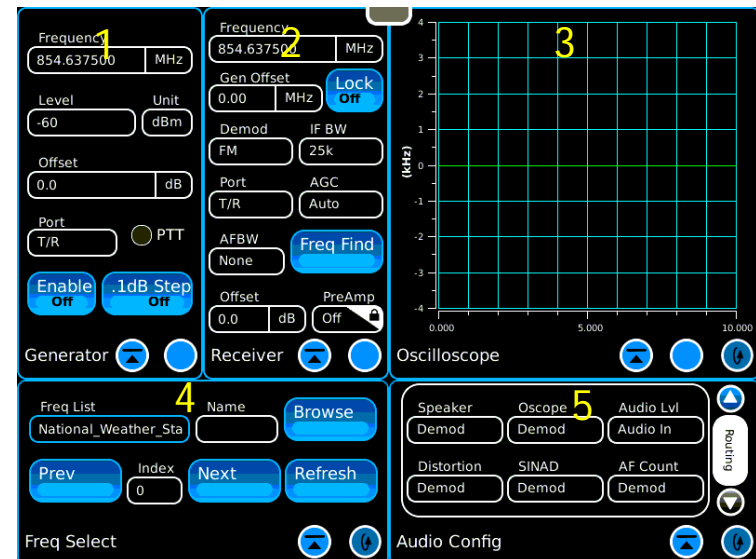
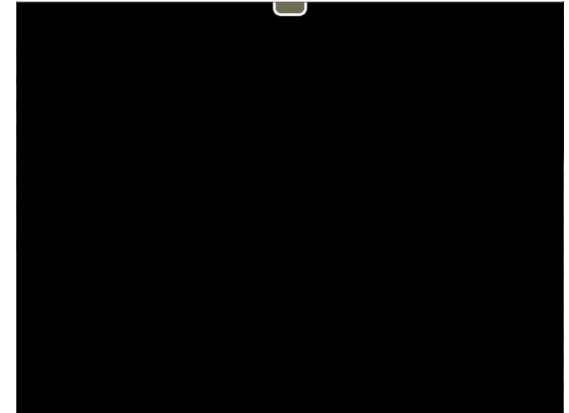
To create a new preset, start by recalling the Clear Display preset then choose the tiles and locations that are convenient for a common task.

After the tiles are placed and audio routings are established the new preset may be saved.

Example:

Open the following tiles and place them as shown.

1. Generator (Maximized): Area 1
2. Modulation (Maximized): Area 3
3. Receiver (Maximized): Area 2
4. Analog Demod: Area 3
5. Freq Select: Area 4
6. Ch Analyzer: Area 3
7. Oscilloscope: Area 3
8. Audio Configuration (Routing): Area 5

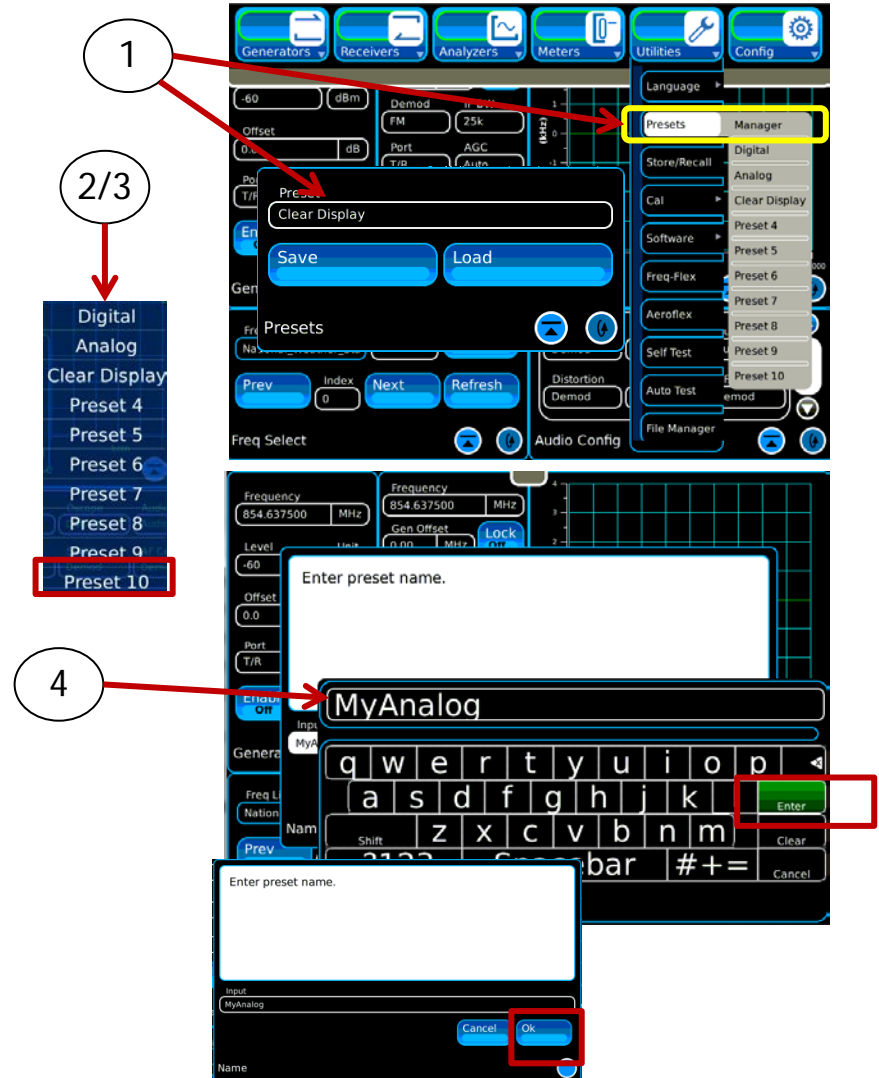


# 8800 Series Presets

## Save a New Preset

To save a new preset:

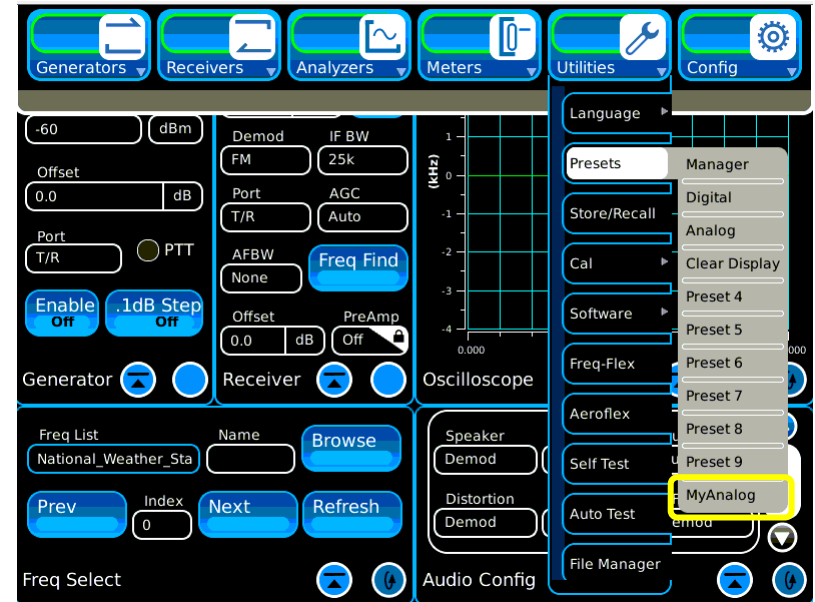
1. Select the Presets Manager
  - This initially will show Clear Display if that was the last preset that was recalled.
2. Select the Preset by touching the area where “Clear Display” is shown. This will bring up a menu of presets to choose from. This is where your new preset will be stored.
3. This example will use Preset 10 as the location to store this new preset so choose that one or the one of your choice.
4. The location has now been set so select the Save Button and you will be prompted to enter a Preset Name of your choice followed by the Enter key on the keyboard.
5. The keyboard will go away then select the “Ok” button to save the Preset.
6. The Preset Manager Window will be displayed and you can close it with the close tile icon.



# 8800 Series Presets

## Recall a Preset

To recall a preset, simply select Presets from the Utilities Menu and touch the preset that you would like to recall.





# 8800SX Options and Accessories

## 8800SX Options and Accessories

139942 8800SX Digital Radio Test Set

### Standard Accessories

Fuse, 5 A, 32 V, Mini Blade	Power Supply
AC Power Cord - USA	AC Power Cord - China
AC Power Cord - Europe	AC Power Cord - UK
Adapter, N(m) to BNC(f), Qty 3	Front Cover
Internal Battery	

### Options

113334	8800OPT01	DMR
113335	8800OPT02	dPMR
113336	8800OPT03	NXDN
113337	8800OPT04	P25
138895	8800OPT05	P25 Phase 2
140215	8800OPT06	DMR Repeater Test
113338	8800OPT09	ARIB T98
113339	8800OPT10	Tracking Generator
113340	8800OPT11	Occupied Bandwidth
113309	8800OPT12	Internal Precision Power Meter (Meter + Sensor)
113342	8800OPT13	External Precision Thru-Line Meter (for use with Bird WPS Sensor)
113343	8800OPT14	PTC
113344	8800OPT15	AAR Channel Plan
139836	8800OPT20	R&S NRT-Z Power Sensor Support
139837	8800OPT21	Selectable Notch Filters
139838	8800OPT22	SNR Meter
138525	8800OPT101	Kenwood NXDN Auto-Test
138526	8800OPT102	Kenwood 5X20 P25 Series Auto-Test
138527	8800OPT103	Motorola APX Auto-Test
138528	8800OPT104	Motorola MOTOTRBO™ Auto-Test
139315	8800OPT105	Motorola ASTRO® 25 XTS®/XTL™ Auto-Test

### Languages

113350	8800OPT300	Simplified Chinese
113351	8800OPT301	Traditional Chinese

113352	8800OPT302	Spanish
113353	8800OPT303	Portuguese
113354	8800OPT304	Malay/Indonesian
113355	8800OPT305	Korean
113356	8800OPT306	Arabic
113357	8800OPT307	Polish
113358	8800OPT308	Russian
113359	8800OPT309	Japanese
113360	8800OPT310	German
113361	8800OPT311	French
139625	8800OPT312	Italian

### Accessories

138313	Calibration Certificate - 8800 Series
82560	AC27003 Attenuator - 20 dB/150 W
67076	Spare Internal Battery
114479	External Battery Charger
114477	Hard Transit Case
114478	Soft Carrying Case
114475	Antenna Kit
114348	Precision DTF/VSWR Accessory Kit for 8800
63927	AC25081 Site Survey Software
92793	5017D Bird Power Sensor
114312	Mounting Bracket
112861	Microphone
62404	DC Cord/Cigarette Adapter
63936	AC24009 DMM Test Leads
112277	10 AMP Current Shunt, 0.01 Ohm
67411	Scope Probe Kit

### Extended Warranties

114481	Extended Standard Warranty 36 Months
114482	Extended Standard Warranty 60 Months
114483	Extended Standard Warranty 36 Months with Scheduled Calibration
114484	Extended Standard Warranty 60 Months with Scheduled Calibration

## Select 8800SX Accessories Overview

*Soft Case* 114478

The soft case allows full operation of the 8800SX while inside the case. The laptop style design is lightweight and provides extra protection during field operation. Storage pockets provide extra space for spare batteries, test cables, etc.



*Hard Transit Case* 114477

The hard transit case features form-fitted slots for the 8800SX, protective cover, precision VSWR/DTF Kit, power supply, 150 W attenuators, spare battery, and more.



*Precision DTF/VSWR Accessory Kit* 114348

This accessory kit provides all items necessary for accurate and VSWR, Return Loss, and Distance-to-Fault measurement. The kit includes a case, return loss bridge, power divider, 50 Ω calibrator, and two N-type test cables specifically designed for the 8800SX.



*Bird 5017D Thru-Line Power Sensor* 92793

The 8800SX also supports the Bird 5017D Thru-Line Power Sensor as an external power meter for users that already have the 5017D. This capability requires 88XXOPT13 and provides simultaneous forward and reverse power measurements up to 500 W and VSWR measurements that are displayed on the 8800SX screen.



# Questions or Comments?

## Contact Information

---

For information about pricing for our products, contact the sales office by calling VIAVI Solutions at (800) 835-2352 or emailing [AvComm.Sales@viavisolutions.com](mailto:AvComm.Sales@viavisolutions.com).

For technical/product support, calibration, maintenance and general customer service inquiries, you can contact our help desk by [clicking here](#), calling (800) 835-2350, or emailing [Service.Americas@aeroflex.com](mailto:Service.Americas@aeroflex.com).

[Click here](#) for more information on the 8800SX and latest software versions and training materials.